

# THE TROUTDALE CHAMPION

JANUARY / FEBRUARY 2022

## Troutdale Shows its Holiday Spirit

Troutdale's first Wind-er Wonderland and Tree Lighting event was a tremendous success! Thank you to everyone who attended and made it such a wonderful holiday experience. In total:

- The event featured 31 local vendors and organizations, and live music
- More than 500 adults attended the event
- Santa was visited by more than 200 children (and a few dogs, too!)
- At least 300 families participated in the Troutdale Teddy Scavenger Hunt



It warms our hearts to say that, because of the generosity of the people who came to downtown Troutdale for the event, SnowCap Community Charities received:

- 198 lbs of food
- 75 lbs of hygiene items
- 25 lbs of clothing/blankets
- 12 lbs of toys, and
- \$154 in monetary donations

These totals, across all categories, exceed anything they've ever received from our previous tree lighting events. Thank you Troutdale!



When it counts, we show up.  
Thank you Troutdale!

## Be Prepared for Winter Weather

Troutdale's Snow Plan: See which streets get plowed first, and why



(In the last issue, we talked about how the City keeps you moving on the streets during a snowstorm. As it becomes more apparent that we may be in for some snow and ice this season, here's a recap of that article.)

When winter weather strikes, **the big question on everyone's mind is: will my street be plowed and sanded?** To get the short answer, go to: [www.troutdaleoregon.gov/gis/page/interactive-web-maps](http://www.troutdaleoregon.gov/gis/page/interactive-web-maps) and select "Snow and Ice Priority Routes". You can also see which streets are cleared by Multnomah County, which are cleared by Troutdale and which are cleared by other agencies by choosing "PDF Maps" then the "Road Jurisdictions" map.

**Arterial streets are cleared first** (those critical to mobility and serving the greatest number of users): 257th Avenue, Troutdale/Buxton, Stark Street, Cherry Park Road, Halsey Street, and Columbia River Highway are County maintained roads. City crews will plow and sand county roads if the County forces are occupied elsewhere.

**Emergency Response and Public Facilities:** Multnomah County Sheriff's Office, Fire Station, City Hall, and schools.

**Collector streets** (provide connections to local streets): Beaver Creek Lane, Chapman Avenue, Corbeth Lane, Evans Avenue, Lewellyn Avenue, Sweetbriar Lane and others.

**Local streets** are near the bottom of the list and, in most cases, warming temperatures/rain will remove the snow or ice before removal crews can get there.

**Citizens can help** by driving only if it's absolutely imperative. Please park your vehicles off the street. Cars and trucks parked on the street during plowing operations pose

a risk to both the public and plowing equipment. Crews hate to have to plow vehicles in with tall snowbanks.

**What the City cannot do** is to remove snow and snow piles from sidewalks and driveways after the snowplows come through. Nor can the city plow snow away from mailboxes. The city does not have the manpower to do that additional work, and by city ordinance, property owners or renters are responsible for clearing their own sidewalks and driveways.

**Please Note:** As the city clears the arterial streets, the snow will pile up and leave a berm, blocking the entrance, or exit, to side streets or to your driveway. Plows may clear the entrances to the side streets, **but only after the arterials are cleared and other priorities listed above are met.**

We know this can be a major inconvenience. But try to think of it as an opportunity to lend a hand to your neighbors who can't shovel their own driveway!

US POSTAGE PAID  
STANDARD  
PRESORT  
TROUTDALE, OR  
PERMIT #16

City of Troutdale  
219 E. Historic Columbia  
River Hwy.  
Troutdale, OR 97060

POSTAL PATRON

**FlashAlert:** Breaking news, closure information, news releases. Sign up at <https://www.flashalert.net/>

**PublicAlerts:** Get alerts by email, text, and phone: <https://www.publicalerts.org/>

**Power outages/downed lines:** [www.portlandgeneral.com/outage](http://www.portlandgeneral.com/outage), or call 503-464-7777

**Troutdale's Facebook page:** Stay up-to-date on the latest in our community. Go to: [www.facebook.com/cityoftroutdale](http://www.facebook.com/cityoftroutdale)

**Broken water pipes?** Call Public Works during regular hours at 503-674-3300. After 5 p.m. or weekends at 503-251-4163



# Reynolds School District 2021-2026 Strategic Plan

Through our District’s new Strategic Plan, we prioritized Literacy, Multilingual Education and Special Education. We hope this will ensure our underserved and marginalized students are represented and receive the best education possible through the pillars of our Strategic Plan

## Strategic Plan’s Four Major Goal Topics

<b>Marginalized Students</b> In order to give voice to our marginalized populations, we will remove barriers, hold high academic expectations, and elicit and honor all voices	<b>Culturally Responsive Instruction</b> We will interrupt bias and microaggression in instructional practices	<b>Student and Staff Wellness</b> We will promote a healthy learning and working environment that provides students and staff with the skills, social support, and environmental reinforcement they need to adopt healthy long-term behaviors	<b>Professional Development</b> We will offer continuous learning opportunities from onboarding to retirement for all staff to develop the skills, knowledge, and confidence to accelerate student outcomes
---	---	--	--

### Mission

We lead with equity to educate and support all students to graduate with the skills and confidence to thrive

### Vision

As a community, we prepare lifelong learners to achieve their full potential in a complex and interconnected world



## Budget COMMITTEE

Reynolds School District

Reynolds School District is seeking community members to join the District Budget Committee!

The goal of the Budget Committee is to present a budget that ensures the district is planning to spend money in a responsible way that meets district goals. The Budget Committee reviews the proposed budget, listens to public comments, and suggests revisions to the budget, if needed. The committee then recommends the budget to the School Board for approval.

The Budget Committee has two open positions to be filled by March 2022. Applicants must live and be registered to vote in the district, and may not be a district employee.

Learn more and apply at:  
<https://www.reynolds.k12.or.us/schoolboard/budget-committee/>

## Joe’s Notebook

### Winter Tree Care: Leaves and Limbs



Hello everyone,

It’s that time of year when the last of the fallen leaves pile up in our yards and streets. Please help our Public Works department by keeping leaves and debris clear from the storm drains and along the front of your property.

Please remember, there is an ordinance against blowing leaves and other debris into the street or sidewalk. This ordinance packs a hefty fine of \$500 per day (*Troutdale Municipal Code 8.20.040 - Dumping and Littering Prohibited*).

Joe Storagee, Code Compliance Officer  
Phone: 503-491-4009  
[joe.storagee@troutdaleoregon.gov](mailto:joe.storagee@troutdaleoregon.gov)

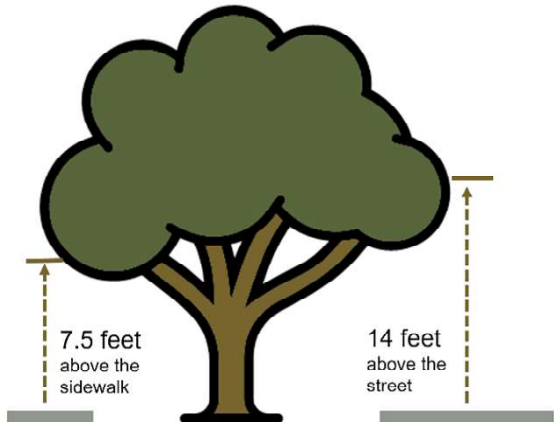
Have a safe and Happy New Year! Joe

That said, I was also asked by Public Works to remind everyone to limb up their trees so the street sweeping machine can drive underneath without hitting the tree branches. Tree limbs should be trimmed to at least 14 feet above the street level and at least 7.5 feet above the sidewalk level (*Troutdale Municipal Code 13.10.140 – Height and projection guidelines*). The street sweeping schedule will be posted on the City’s website so you can plan to trim your tree in time. Go to: <https://www.troutdaleoregon.gov/publicworks/page/street-sweeping>

Here are some tree care reminders:

**Troutdale Municipal Code 13.10.150 - Pruning and maintenance—General requirements:**

- Care and maintenance of street trees is the responsibility of the adjacent property owner.
- Property owners and landscaping companies shall not use a harmful tree pruning practice called “tree topping.”
- Property owners shall prune their trees that extend over streets and sidewalks to meet the clearance requirements (14 feet above the street and 7.5 feet above the sidewalk).



Find tree pruning tips at:  
[www.treesaregood.org/treeowner/pruningyourtrees](http://www.treesaregood.org/treeowner/pruningyourtrees)

## We’re Changing out Your Old Water Meters for New Ones. Here’s Why.

The City of Troutdale is in the process of executing a multi-year meter replacement and upgrade program. This means that sometime in the near future you may receive a notice on your door that includes the following information (what follows is a portion of that notice):

*“Today, as part of the City’s Meter Replacement Program, your old water meter was replaced with a brand-new water meter.*

*Please be aware that, over time, meters lose their accuracy. Due to this and the new, more accurate meters being installed, you will likely see an increase in water consumption. This would be a great time to check for leaks in and around your home. Things like leaky or running toilets or dripping faucets can drastically increase water consumption over the course of a month. This kind of leak may or may not have been detected by your old meter, but they will likely be detected now.”*

Upon receiving this notice, you might wonder why you weren’t notified more in advance. Due to the nature of the work, it’s very difficult for us to predict when and

*“Most of the meters being replaced are at least 30 years old, and some are older. The City is looking to more accurately account for water use with the meter replacement program. The new meters have a 15-year full replacement warranty with a five additional years of pro-rated replacement warranty - for an expected lifespan of 20 years.”*

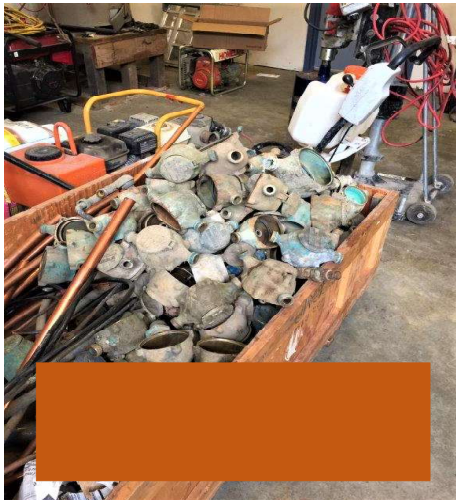
*David Schaffer, Public Works Superintendent*

where exactly we will be on a particular day, or even week. Our goal is to replace five-hundred water meters per year and this work is completed as a lower priority by in-house staff. Several higher priority items can and will come up that take staff away from this project on a regular basis, making it very difficult to give accurate notice. Please keep in mind that if a staff member comes by, and you are in the middle of using water for any reason, we are happy to come back later in the day to complete the replacement. This work may be temporarily disruptive, but **we are generally able to complete a meter replacement in less than thirty minutes.**

You might also wonder why you need a new meter. Water meters, like any

other mechanical device, do eventually wear out. Also, there have been significant advances in technology that make the meter reading process much easier, more efficient, and more accurate. Further, as stated in the notice above, a new meter will show small amounts of water loss much more accurately, thus allowing the city and homeowner to detect leaks that waste potentially large amounts of water.

Your water meter may not be visible to you on a daily basis but rest assured that it’s a very important part of the City infrastructure, and assists us in maintaining cost-effective water service to the residents of Troutdale every single day of the year.





# TROUTDALE RECREATION

## Exercise Your Mind, Body and Soul This Winter

Register now for Troutdale Winter 2022 recreation programs

The City of Troutdale Recreation Department is excited to offer some great programs so everyone can exercise their bodies and minds as the east winds get stronger and the temperatures drop. The Winter 2022 Recreation Guide will start hitting mailboxes on January 4 and registration begins on January 5.

### Here's a quick preview of upcoming programs:

Kinder® programs are back with a variety of options for kids ages 2-9 to get the wiggles out through movement, dance and yoga. Classes will be held in the Sam Cox Building at Glenn Otto Park and led by experienced instructor Debbie Sackett.

If you feel like you need to increase your flexibility and strength, you can check out **a pair of yoga classes**. One class combines several classic yoga styles into one workout while the other is a gentle-paced option.



Young girls pounding millet, a staple food in West Africa. Photo by Mollie King, 1993

For those of you who are looking to tap into your creative side, we have some **one-day art and craft workshops**. First up is a family-friendly workshop where you can **make homemade cards/decos for Valentine's Day**. In fluid art, you will get the opportunity to **create your own abstract masterpiece** on an 8x10 canvas. Lastly, we have a **card making class with a bit of yoga!**

The travel bug has been biting a lot of us over the past two years, so **how about taking a virtual visit to West Africa?** You'll get a look

at daily life in several West African countries through photos, music, recipes, and language, from **Troutdale Recreation Manager Mollie King and Ashland Parks and Recreation's Natalie Mettler**, who will share their experiences living, studying and working in several West African countries.

If overseas travel isn't your thing, how about camping? Our **Camping 101 series will cover all the basics** to help any novice feel confident in the great outdoors and get you ready for summer! Session 1 deals with shelters and campsites; Session 2 covers building fires and outdoor cooking; and Session 3 touches on entertainment and how to enjoy your time in the wild with fun, electronic-free activities. It all culminates with an *optional* camping weekend at Milo McIver State Park over Memorial Day Weekend!



**CITY OF TROUTDALE  
PARKS &  
RECREATION**

REGISTRATION OPENS ON JANUARY 5

## The NEW Public Safety and Equity Advisory Committee

The Public Safety and Equity Advisory Committee (PSEAC) is charged with evaluating and making recommendations to the City's



elected and appointed officials on matters relating to public safety, including law enforcement, fire and medical services.

Last spring, the City Council voted to reinstate the former Public Safety Advisory Committee and expand upon its purpose to ensure that all public safety services are provided to everyone equitably regardless of a person's race, color, religion, sex, sexual orientation, national origin, marital status, age, disability or other classes protected under Oregon statutes. This Committee is now called the Public Safety and Equity Advisory Committee (PSEAC) and they will be meeting at least quarterly on the 3<sup>rd</sup> Thursday of the month at 6:30 p.m. The next scheduled meeting will be on January 20<sup>th</sup>. You can visit the PSEAC's webpage at [www.troutdaleoregon.gov/pseac](http://www.troutdaleoregon.gov/pseac) to see upcoming meeting schedules and to view meeting agendas.

## Recycle, or Not? What to do with those 'stringy' household items

Wires, hoses, chains and electric cords are among those things that are mundane but nonetheless endlessly utilitarian and prevalent in our daily lives. And when they wear out and it's time to get rid of them, it can be a bit puzzling to know what to throw away and what to recycle.

**Anything long and stringy like chains, hoses, charging cables, headphones and holiday lights should go in the trash** at home and work rather than the mixed recycling bin. However, an even better option for **electrical wires, cables, and cords is to bring them to one of the bi-annual Troutdale Cleanup Events** that also function as an Oregon E-Cycles collection site courtesy of

Green Century Electronics, or take them to a local e-cycler (see Metro's 'Find a Recycler' webpage).

When these items end up in the mixed recycling bin, they get tangled in the sorting equipment, causing delays and creating hazards for the workers who run the equipment. It might feel wrong, but remember you are protecting the environment and workers by learning how to recycle right and keeping improper materials out of the recycling bin.

To reduce waste, use wires, hoses, chains and electric cords until they are no longer functional or no longer safe to use. You can also donate items that are still in good condition if you simply don't need them anymore.

**For more answers on your recycling questions, follow @recycleornot on Instagram and visit [RecycleOrNot.org](http://RecycleOrNot.org). For Spanish, follow @reciclarono on Instagram and visit [ReciclarONo.org](http://ReciclarONo.org).**

## Oil Leak in the Street = Oil Leak to the Creek

When you drive around town you are bound to see unsightly motor oil stains on the public streets from parked vehicles. With regular vehicle maintenance, a leak should be detected and cured sooner rather than later to address the problem. But sometimes a leak goes undetected until it becomes obvious. The important takeaway is to fix a motor oil leak as soon as possible and minimize its impact to nearby waterbodies. If a trip to the mechanic's shop isn't possible for a few days or you only have time to fix it on the weekend, please observe the following interim guidelines:



1. Park your vehicle in the garage if possible;
2. Place a drip pan, a cookie sheet with sides, or any other common household item able to capture and contain the oil under the vehicle;
3. Avoid parking directly over or near a storm drain;
4. Clean up a fresh oil leak with an oil absorbing material such as an absorbent pad or kitty litter and properly dispose of the fouled material in your trash can;
5. Recycle captured liquid oil in a sealed transparent container, like a milk jug, at the curb for pickup by Waste Management on your normal trash day, or drop it off at a location that recycles oil (use Metro's **Find a Recycler** webpage at [www.oregonmetro.org](http://www.oregonmetro.org))

Motor oil pollution in the environment is detrimental to human health and to wildlife. Leaked oil is transported by rain that enters the storm sewer system that typically goes untreated to Beaver, Arata or Salmon Creeks, the Sandy and Columbia Rivers, or groundwater infiltration wells. These are valuable natural resources, critical to the life-giving water cycle, that we depend on for recreation and drinking water, along with practically every aspect of daily living. Wildlife such as steelhead and Coho salmon, along with a myriad of others, depend on them for habitat and spawning. For these reasons the City has ordinances prohibiting pollution of storm water, and leaving a leak unattended is a violation of municipal code that may result in an enforcement action by the City. **As Benjamin Franklin famously once said, "An ounce of prevention is worth a pound of cure."**





# New Year Greetings from Troutdale Historical Society

We have a special offer from the Oregon Historical Society (OHS). All new Troutdale Historical Society memberships and renewals starting January 1, 2022 through March 31, 2022, will receive a joint annual membership from OHS (\$80 value). Become a member or renew your membership AND automatically become a member of Oregon Historical Society. For more information, contact the Troutdale Historical Society at [troutdalehistory@gmail.com](mailto:troutdalehistory@gmail.com) or visit [troutdalehistory.org](http://troutdalehistory.org)

## East County Resolutions Training Coming Up



**Conflict Management Training**  
Starts February 3-5, 2021 (held virtually)

In this 16-hour training, you will learn skills to effectively navigate conflict. The training includes skill development in communication, listening and conflict resolution. You will learn from experienced instructors how to navigate interpersonal conflict and gain valuable tools that can be applied in all facets of life – from the workplace to the home and community.

*"If someone wants to have better skills working with anyone in any aspect of their lives, take this training."*  
Trainee

Applications are due January 29<sup>th</sup>. To apply, email [Mediate@GreshamOregon.gov](mailto:Mediate@GreshamOregon.gov), or call 503-618-3247. No prior experience is needed.

## Out in the Parks with Tim Seery



Craig Lichtenthaler

As we move into the winter season, I like to reflect on the past year. So many things to take note of. One project that stands out is the planting of a live Christmas Tree in Mayor's Square in a new brick planter built for this purpose. We value citizen's input, like the idea we received from a Parks Advisory Committee member who suggested that "we quit killing trees for our holiday enjoyment" and develop a plan for a live tree planter in Mayor's Square (see Page 1). So please come by and enjoy the live blue spruce tree in its new and permanent location.

The Parks Department wishes to acknowledge the retirement of Craig Lichtenthaler. Craig served the City of Troutdale for 25 years in the Parks Department.



## News from your Chamber

Each Wednesday, meet your Chamber friends at 7:30 to 8:45 a.m. for **Coffee Chat! Network, Learn and Share** during this wonderful time of the day and get to know your fellow business owners and employees. We are hosting both in-person and Zoom mornings – check our website at [www.westcolumbiagorgechamber.com](http://www.westcolumbiagorgechamber.com) for specific details. Want to Host the Coffee Chat, and be a featured speaker? Contact Marcia at 503-669-7473 and she'll schedule the perfect time for you.

- As we get closer to Spring, **First Friday** and the **Business Marketplace** will showcase our Chamber members.
- Tis the Season - 2022 will again bring elections, and your Chamber is planning to host a **Candidate Forum**. We invite you to ask the hard questions and meet the candidates. Details coming soon.
- Ready for some Fun? Spring is a great time to get outside with your pet and with friends, family and team. Join the **"Heads and Tails" Walk-A-Thon** along the trails of the Gorge! Help the Chamber and your favorite Animal Charity as you walk, hike and have some fun. Date and time to follow.
- Get involved! The West Columbia Gorge Chamber is a wonderful place to get to know your fellow businesses in the area. We're small but mighty, and looking to grow more. 2022 will be a great time to get back to business and get involved in YOUR community.

Questions? Call Cindy Passannante, Chamber President, at 503 658-5646, or [cptrips@aol.com](mailto:cptrips@aol.com). You can also contact Marcia Chiaudano, Membership Director, at 503-669-7473, or [membership@westcolumbiagorgechamber.com](mailto:membership@westcolumbiagorgechamber.com)



## You may be eligible for a discount on your monthly utility bill.

65 or older, or receiving Social Security Disability benefits? You may be eligible for a discount on your monthly utility bill. The City offers a program to provide a discount on the sewer portion of the utility bills of eligible senior and disabled citizens. If you are interested in learning if you are eligible, stop by City Hall to obtain information or go to the City's website at [www.troutdaleoregon.gov](http://www.troutdaleoregon.gov). Click on "Departments", then "Finance" and then "Utility Rates" to find the information. You can also call us at 503-665-5175, and we'll mail you the information. City Hall is located at 219 East Historic Columbia River Highway, and is open from 8 a.m. to 5 p.m. Monday through Friday.

## EVENT CALENDAR

### DECEMBER

**31**  
**New Years' Day (Observed), All City Offices Closed**  
Police/Fire emergency, call 9-1-1  
Water/Sewer emergency, call 503-251-4163

### JANUARY

**17**  
**Martin Luther King, Jr. Day, All City Offices Closed**  
Police/Fire emergency, call 9-1-1  
Water/Sewer emergency, call 503-251-4163

**29**  
**Last day to sign up for Conflict Management Training, 6 p.m. (see article above)**

### FEBRUARY

**21**  
**Presidents Day, All City Offices Closed**  
Police/Fire emergency, call 9-1-1  
Water/Sewer emergency, call 503-251-4163



**Thank You**  
**East County Community.**  
**We Wish You Peace and Prosperity.**

We appreciate the many years, of supporting our events that helps our youths and families.



**Kiwanis**  
CLUB OF THE COLUMBIA GORGE

find us on ...



## City Meetings

### City Council Regular Meetings

Police Facility Kellogg Room - 7 P.M.  
January 4, January 18  
February 8, February 22

View Council meetings live on Comcast Channel 30 or Frontier Channel 38 at 7 p.m.; rebroadcasts are Fridays at 4 p.m. and Sunday at 9 p.m.

### Planning Commission

Police Facility Kellogg Room - 7 P.M.  
January 12, February 9

### Parks Advisory Committee

Police Facility Kellogg Room - 7 P.M.  
January 19, February 16

### Citizens Advisory Committee

Police Facility Kellogg Room - 7 P.M.  
January 5, February 2

### Historic Landmarks Commission

Police Facility Kellogg Room - 7 P.M.  
January 27

### Public Safety and Equity Advisory Committee

Police Facility Kellogg Room – 6:30 P.M.  
January 20

Find meeting agendas, Council packets and audio/video of Council meetings at [www.troutdaleoregon.gov](http://www.troutdaleoregon.gov)

### Urban Renewal Agency

Police Facility Kellogg Room – 7 P.M.  
January 18, February 15 (if needed)

## City Departments

City Hall Main Number	503-665-5175
Building Permits	503-674-7229
Building/Parks Rentals	503-674-7297
Business Licensing	503-665-5175
Code Compliance	503-491-4009
Fire Department (Gresham)	503-618-2355
Mayor & Council	503-674-7258
Multnomah County Sheriff's Office (MCSO)	
MCSO Business Office	503-988-7300
MCSO Records	503-988-7300
(press '0' for Police Records)	
Municipal Court	503-674-7236
Police & Fire	
Non-Emergency Dispatch	503-823-3333
Parks Department	503-674-7271
Planning/Zoning	503-674-7247
Public Works (Wastewater)	503-666-8377
Public Works (Water & Streets)	503-674-3300
Recreation Program	503-674-7206
Water/Sewer - Billing Questions	503-674-7232
Water/Sewer - Open/Close Acct.	503-674-7225

## City Buildings

**City Hall** / 219 E. Historic Columbia River Highway  
**Municipal Court Chambers** / 234 SW Kendall Court  
**Council Chambers** / 234 SW Kendall Court  
**Public Works** / 342 SW 4th Street  
**Building / Planning** / 2200 SW 18th Way  
**Parks / Facilities** / 2200 SW 18th Way  
**Water Pollution Control Facility** / 1820 NW Graham Road  
**City Conference Building (CCB)** / 223 South Buxton Road  
**Glenn Otto Park** / 1102 E. Historic Columbia River Highway  
**Sam Cox Building at Glenn Otto Park** / 1102 E. Historic Columbia River Highway